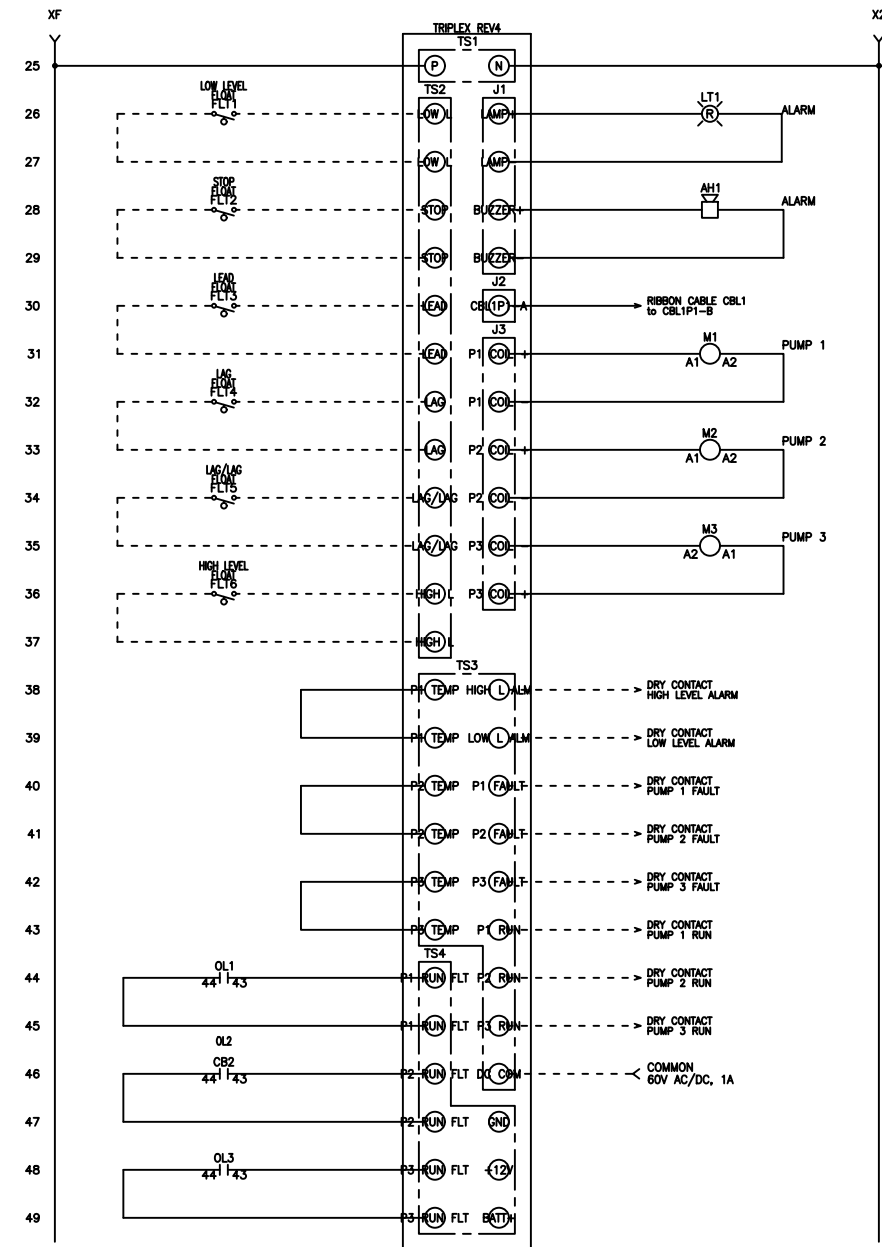
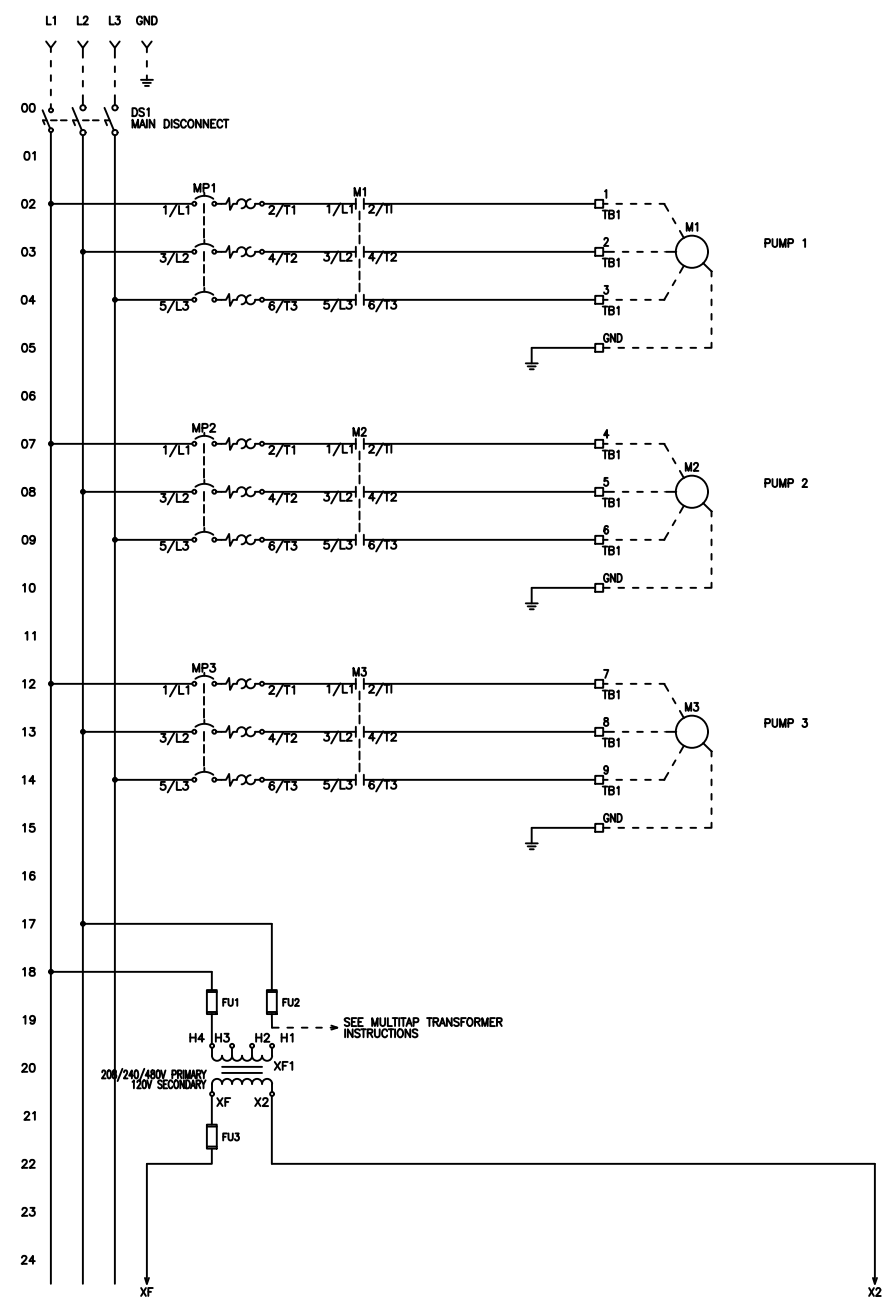


FNAME: WT3P-6-X

REVDATE: 0619

REVISIONS				
ZONE	REV	DESCRIPTION	DATE	APPROVED
	A	UPDATED INSTRUCTIONS	6/2/17	
	B	ADDITION OF OPEN CB1,2,3. REMOVED TB4	6/26/18	
	C	UPDATED TB1 REMOVED TB2,3	10/3/18	
	D	TRANSFORMER LABEL X1 TO XF	4/29/19	
	E	TRANSFORMER INSTRUCTIONS	5/15/19	
	F	UPDATED LABELS AND FIELD WIRING	6/28/19	IF



MULTITAP TRANSFORMER INSTRUCTIONS:
 CONNECT FACTORY TAGGED WIRES TO APPROPRIATE TRANSFORMER VOLTAGE TAP. SEE BELOW FOR CONNECTIONS:
 FOR 208V OPERATION, CONNECT TO FUSE INPUT H3F & TO TRANSFORMER TAP H3
 FOR 240V OPERATION, CONNECT TO FUSE INPUT H2F & TO TRANSFORMER TAP H2
 FOR 480V OPERATION, CONNECT TO FUSE INPUT H1F & TO TRANSFORMER TAP H1
 NOTE: H1F, H2F & H3F ARE THE SAME TERMINAL

----- DASHED LINE INDICATES FIELD WIRING.

USE COPPER CONDUCTORS ONLY.
 TEMPERATURE RATING OF CONDUCTORS IS TO BE 60°C (167°F).
 BRANCH CIRCUIT PROTECTION SHALL BE PROVIDED BY THE INSTALLER; MUST BE SIZED ACCORDING TO PUMP/MOTOR MANUFACTURING SPECIFICATIONS.
 VERIFY CORRECT OPERATION OF CONTROL PANEL AFTER INSTALLATION IS COMPLETE.

DRAWN BY: KJ
 DATE: 4/18/17
 APPROVED BY: _____
 DATE: _____

THIS DRAWING CONTAINS PROPRIETARY INFORMATION AND SHALL NOT BE USED OR DISCLOSED WITHOUT PRIOR WRITTEN AUTHORIZATION.

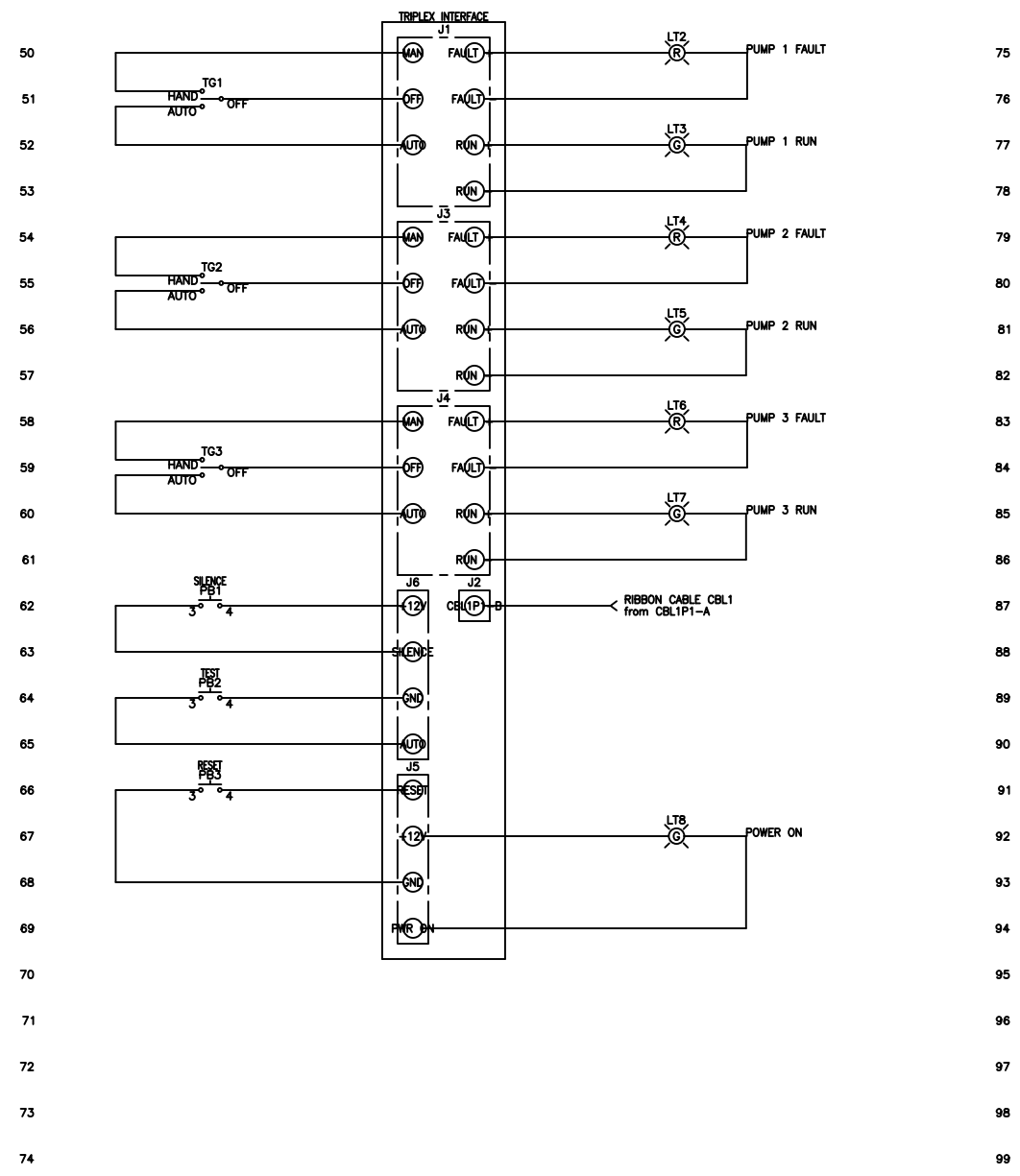


TITLE: WT3P-6-X CONTROL SCHEMATIC			
SIZE B	DWG NO. 1616	PART NO. WT3P-6-X	REV F
SCALE NONE	SHEET 1 OF 2		

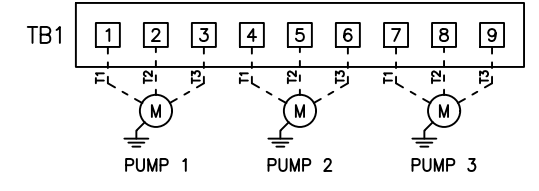
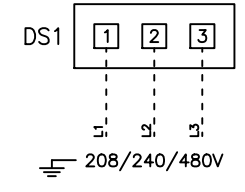
FNAME: WT3P-6-X

REVDATE: 0619

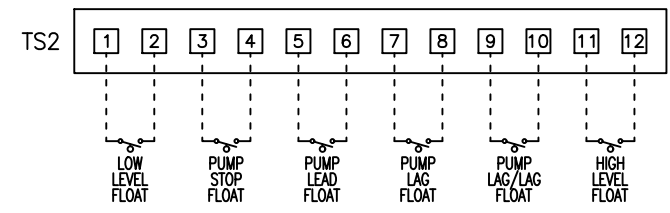
REVISIONS				
ZONE	REV	DESCRIPTION	DATE	APPROVED
	A	UPDATED INSTRUCTIONS	6/2/17	
	B	ADDITION OF OPEN CB1,2,3. REMOVED TB4	6/26/18	
	C	UPDATED TB1 REMOVED TB2,3	10/3/18	
	D	TRANSFORMER LABEL X1 TO XF	4/29/19	
	E	TRANSFORMER INSTRUCTIONS	5/15/19	
	F	UPDATED LABELS AND FIELD WIRING	6/28/19	IF



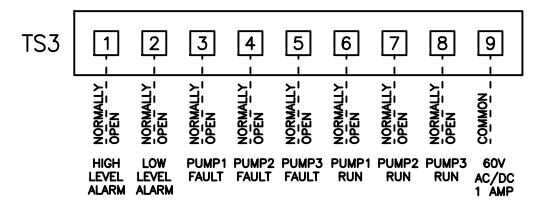
FIELD WIRING CONNECTIONS



- TS2 PINOUT**
 PIN 1: LOW L
 PIN 2: LOW L
 PIN 3: STOP
 PIN 4: STOP
 PIN 5: LEAD
 PIN 6: LEAD
 PIN 7: LAG
 PIN 8: LAG
 PIN 9: LAG/LAG
 PIN 10: LAG/LAG
 PIN 11: HIGH L
 PIN 12: HIGH L



- TS3 PINOUT**
 PIN 1: HIGH L ALM
 PIN 2: LOW L ALM
 PIN 3: P1 FAULT
 PIN 4: P2 FAULT
 PIN 5: P3 FAULT
 PIN 6: P1 RUN
 PIN 7: P2 RUN
 PIN 8: P3 RUN
 PIN 9: COMMON



DRY CONTACT INDICATORS

MULTITAP TRANSFORMER INSTRUCTIONS:
 CONNECT FACTORY TAGGED WIRES TO APPROPRIATE TRANSFORMER VOLTAGE TAP. SEE BELOW FOR CONNECTIONS:
 FOR 208V OPERATION, CONNECT TO FUSE INPUT H3F & TO TRANSFORMER TAP H3
 FOR 240V OPERATION, CONNECT TO FUSE INPUT H2F & TO TRANSFORMER TAP H2
 FOR 480V OPERATION, CONNECT TO FUSE INPUT H1F & TO TRANSFORMER TAP H1
 NOTE: H1F, H2F & H3F ARE THE SAME TERMINAL

----- DASHED LINE INDICATES FIELD WIRING.

USE COPPER CONDUCTORS ONLY.
 TEMPERATURE RATING OF CONDUCTORS IS TO BE 60°C (167°F).
 BRANCH CIRCUIT PROTECTION SHALL BE PROVIDED BY THE INSTALLER; MUST BE SIZED ACCORDING TO PUMP/MOTOR MANUFACTURING SPECIFICATIONS.
 VERIFY CORRECT OPERATION OF CONTROL PANEL AFTER INSTALLATION IS COMPLETE.

DRAWN BY: KJ	DATE: 4/18/17	SEEWATER <i>Inc.</i>			
APPROVED BY:	DATE:				
THIS DRAWING CONTAINS PROPRIETARY INFORMATION AND SHALL NOT BE USED OR DISCLOSED WITHOUT PRIOR WRITTEN AUTHORIZATION.		TITLE: WT3P-6-X CONTROL SCHEMATIC			
		SIZE B	DWG NO. 1616	PART NO. WT3P-6-X	REV F
		SCALE NONE	SHEET 2 OF 2		